

inac 2 (63)

N 89° 41' W

66 a 64+09.77

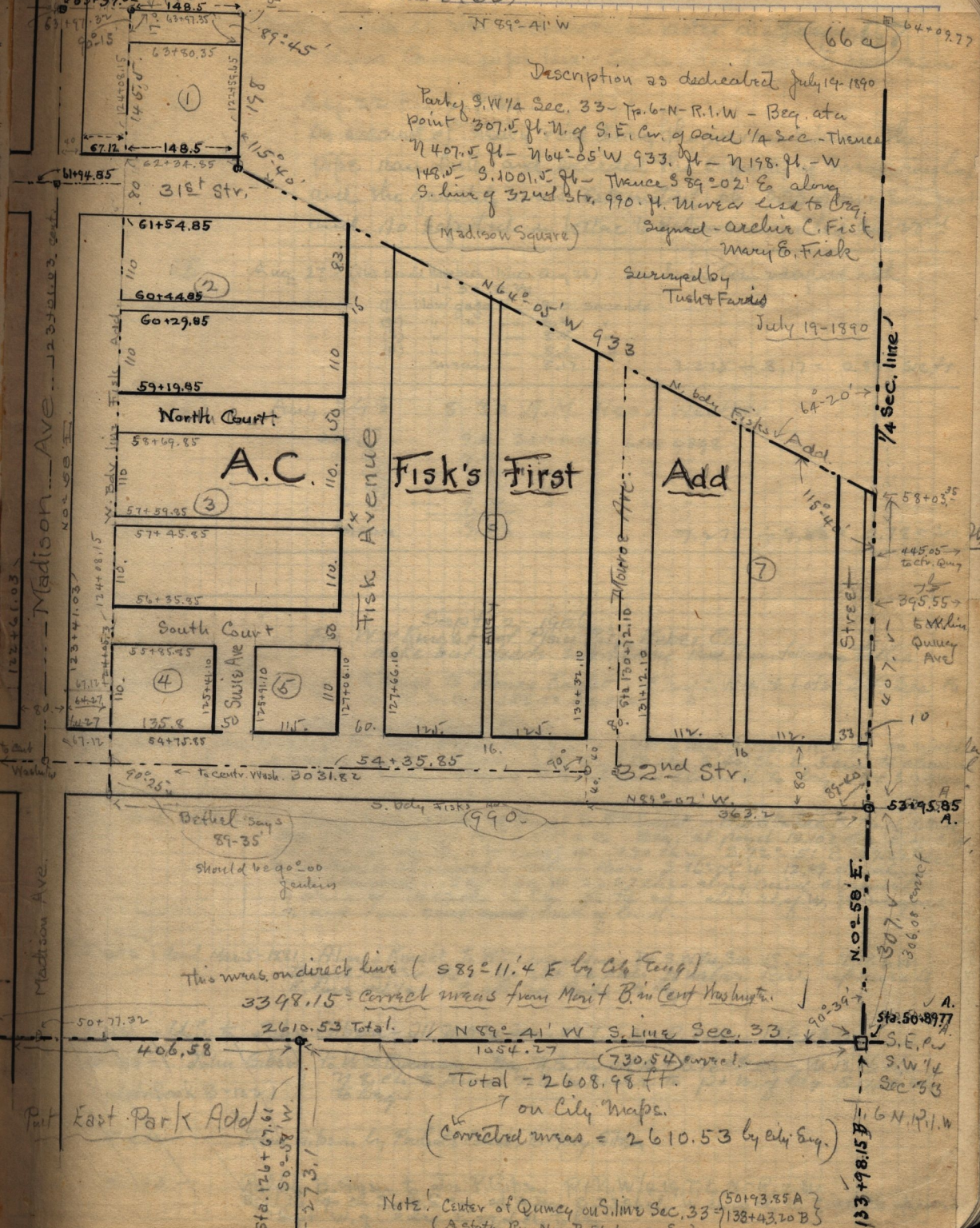
Description as dedicated July 19, 1890

Part of S.W 1/4 Sec. 33 - To 6-N-R-1-W - Beg. at a point 307.5 ft. N. of S.E. Cor. of said 1/4 Sec. - Thence N 40.7.5 ft - N 64° 05' W 933. ft - N 198. ft. - W 148.5 ft. - S. 1001.5 ft. - Thence S 89° 02' E along S. line of 32nd Str. 990. ft. More or less to City

Signed - Archie C. Fisk
Mary E. Fisk

Surveyed by
Tusk & Fariss

July 19-1890



(Madison Square)

A.C.

Fisk's First

Add

South Court

Swiss Ave

Fisk Avenue

N. body Fisk's Add

Bethel Bays 89-35

Should be 90° 00 feet

This was on direct line (S 89° 11.4' E by City Eng)

3398.15 = correct meas from Merit B. in Cent Washington

2610.53 Total

N 89° 41' W S. Line Sec. 33

Total = 2608.98 ft.

on City Maps

(Corrected meas = 2610.53 by City Eng)

Note: Center of Qumey on S. line Sec. 33 (50+93.85 A) (138+43.20 B) (A Station Run N - B Station on Co.)